

# GOLDQUEST

TSXV: GQC



## Las Tres Palmas Copper-Gold District Dominican Republic

April 2013



# Forward Looking Statements

Statements in this document, to the extent not based on historical events, constitute forward-looking statements. Forward-looking statements include, without limitation, statements regarding market and general economic conditions, exploration plans, and statements regarding future-oriented costs and expenditures. Investors are cautioned not to place undue reliance on these forward-looking statements, which reflect management's analysis only as of the date thereof. These forward-looking statements are estimates and are subject to certain risks and uncertainties that could cause actual results to differ materially. Such risks and uncertainties with respect to the company include the effects of general economic conditions, changing foreign exchange rates and actions by government authorities, uncertainties associated with exploration, legal proceedings and negotiations, industry supply levels, competitive pricing pressures and misjudgments in the course of preparing forward-looking statements.

# GoldQuest Snapshot

- The Romero Discovery: **231m @ 2.4 g/t gold.** (2013 05 23)
- In the Dominican Republic (DR), mining friendly jurisdiction
- Experienced board & management with previous successful development in the DR.
- Approx. \$15 million in treasury
- Aggressive 2013 exploration and drilling program up to 25,000 metres of drilling



# Capital Structure

Share Price (2013-03-12)	\$ 0.28
Shares Outstanding	143.9 million
Fully Diluted	154.8 million
Market Capitalization (2013-03-12)	\$ 40 million
Cash	\$ 15 million
52 Week High / Low	\$ 2.03 / \$ 0.04
Bought Deal Financing at \$0.45 (2012-06-21)	\$ 6.5 million
Bought Deal Financing at \$1.25 (2012-08-21)	\$ 15 million

# GoldQuest Directors and Management

---

## **Bill Fisher**

Executive Chairman

- **30+ years experience in the mining industry**
  - **GlobeStar (CEO), Aurelian (Chairman), Boliden AB (VP Exploration)**
- 

## **Julio Espailat**

Chief Executive Officer

- **30+ years experience in the mining industry**
  - **GlobeStar (Country Manager), Falconbridge (Executive)**
- 

## **Paul Robertson**

Chief Financial Officer

- **15+ years experience in mining and finance**
  - **Chartered Accountant**
  - **Grayd Resources (CFO)**
- 

## **Patrick Michaels**

Non Executive Director

- **Financier; Director, Romarco Minerals**
  - **Background in corporate finance**
- 

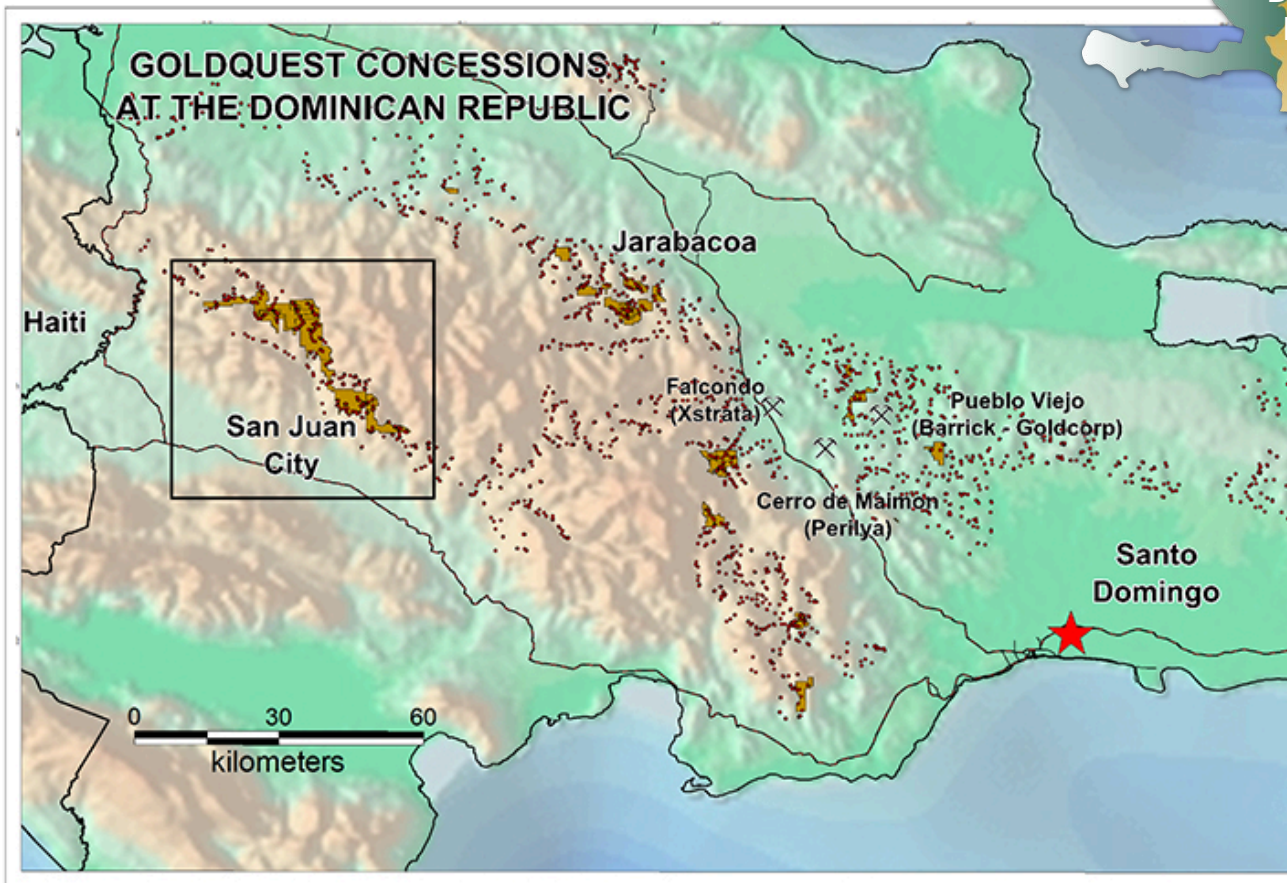
## **Florian Siegfried**

Non Executive Director

- **Financier**
  - **Accounting professional**
-

# Dominican Republic Background

- Pro-mining & pro-foreign investment
- Well-established, competitive mining and tax code
- Long history of resource projects



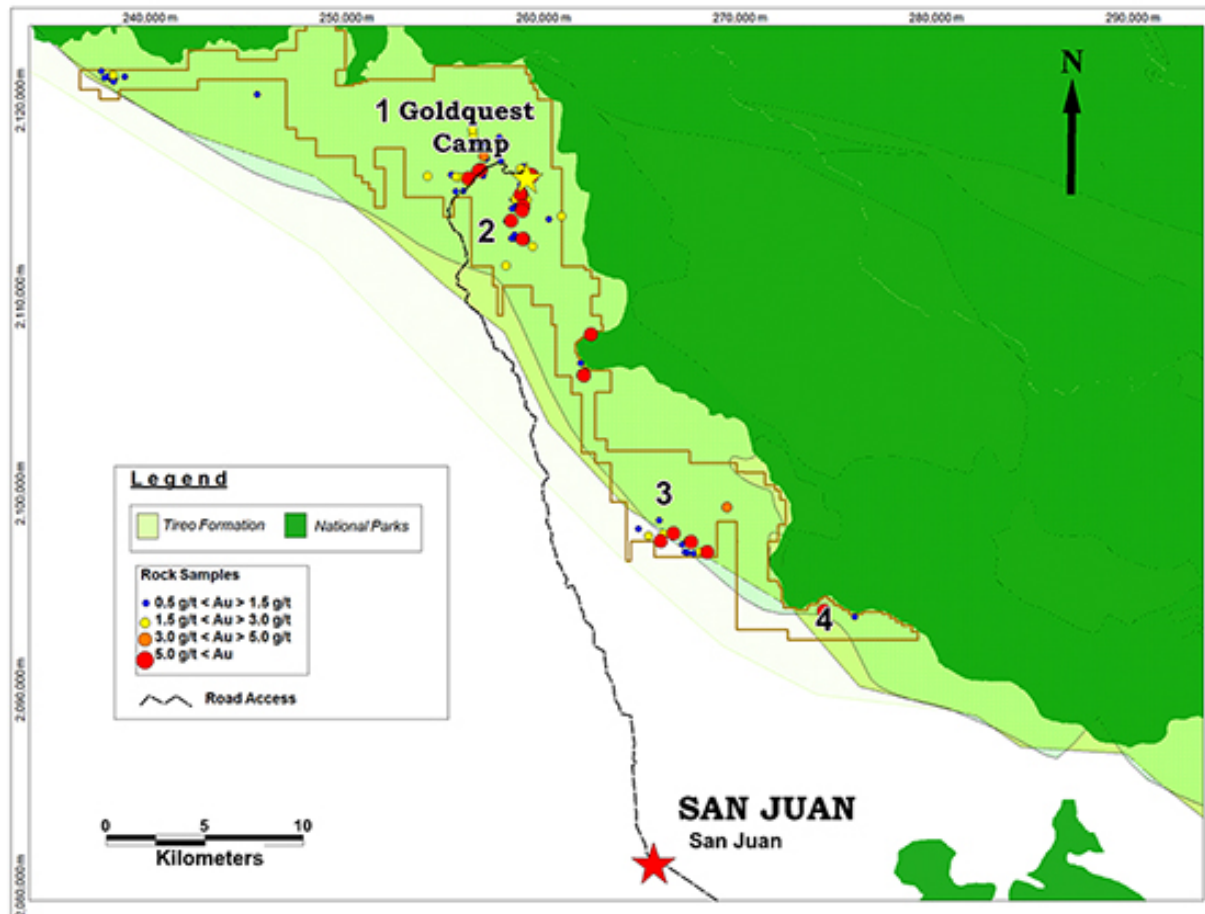
**Barrick / Goldcorp** (Canada):  
\$4 billion, 22 million ounce  
Pueblo Viejo Mine (2012)

**Xstrata** (Switzerland):  
Large scale Nickel Complex  
(1971)

**Perilya** (Australia):  
Cerro de Maimon Copper/Gold  
mine (2008)

# GoldQuest Tireo Portfolio in Western DR

- Includes at least 4 areas of anomalous gold along 60km strike length
- Tireo Formation is a favourable host to gold/copper mineralization



1. Los Comios/Guama\*
1. Las Tres Palmas\* (LTP)  
*Includes Romery Discovery, La Escandalosa and Hondo Valle (GoldQuest Camp)*
3. Loma Viejo Pedro
3. Jengibre\*\* (36m @ 1.6g/t gold)

\*Drilling in progress/shortly

\*\*Geophysics in progress

# The Romero Discovery

Adjacent to GoldQuest's Hondo Valle Field HQ



Romero  
Discovery

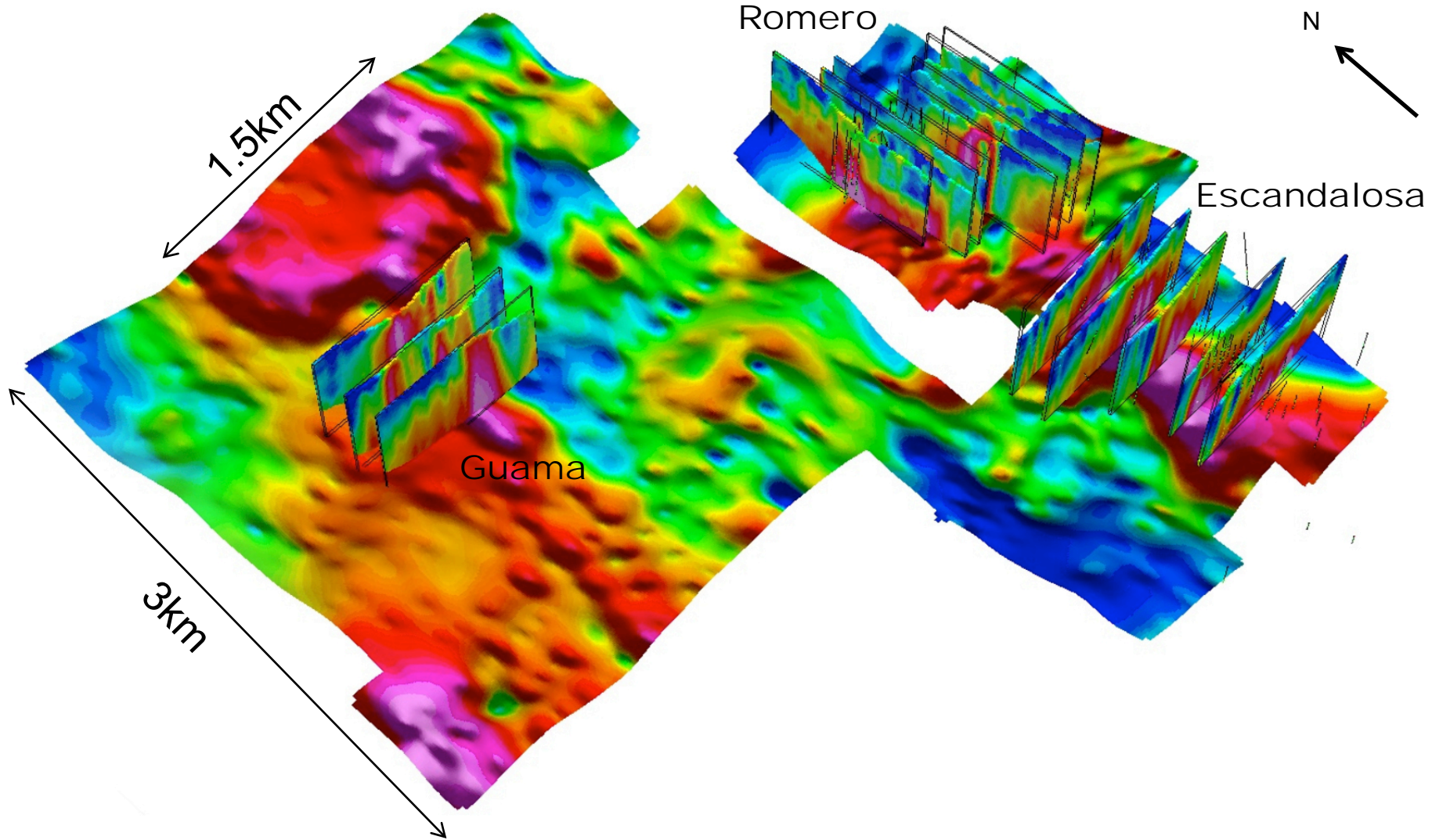
500 m

Hondo Valle

To Escandalosa

# Similar IP Targets

Las Tres Palmas Trend



# Las Tres Palmas Trend

## Shallow IP Survey

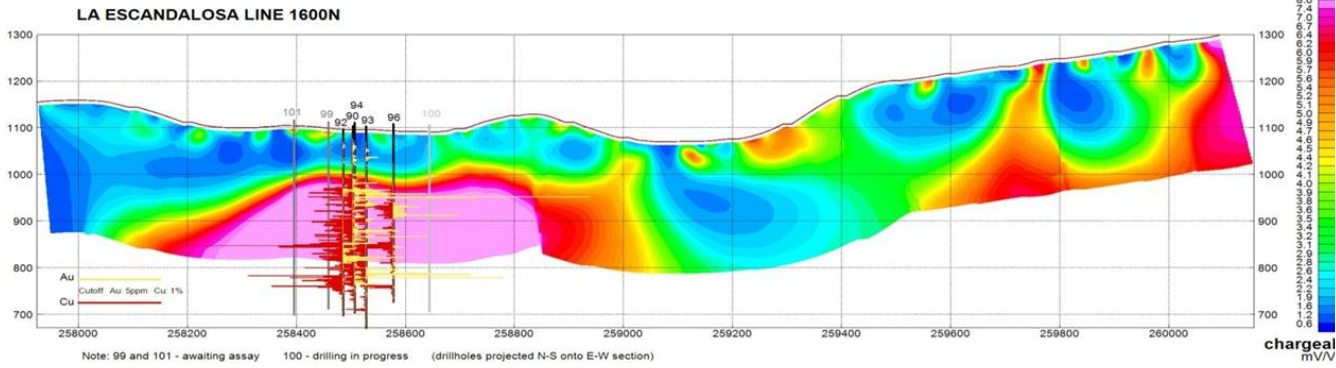
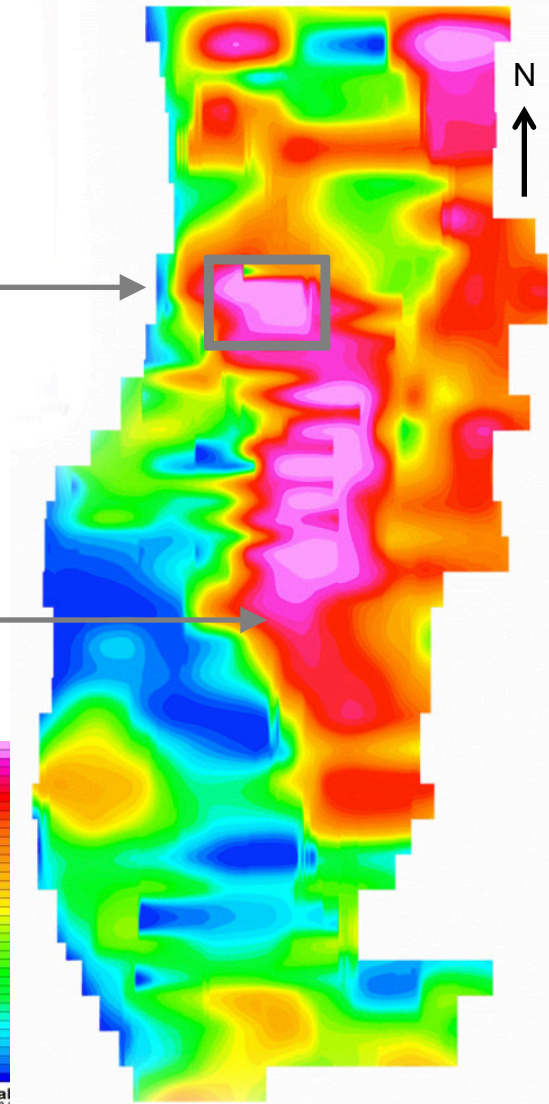


### Romero discovered by IP geophysics (20% of anomaly):

- Best hole: LTP 94 – 235m @ 7.9 g/t Au & 1.4% Cu
- Zone of Mineralization approx. 500m EW, 200m NS

### Escandalosa: NI 43-101 Resource

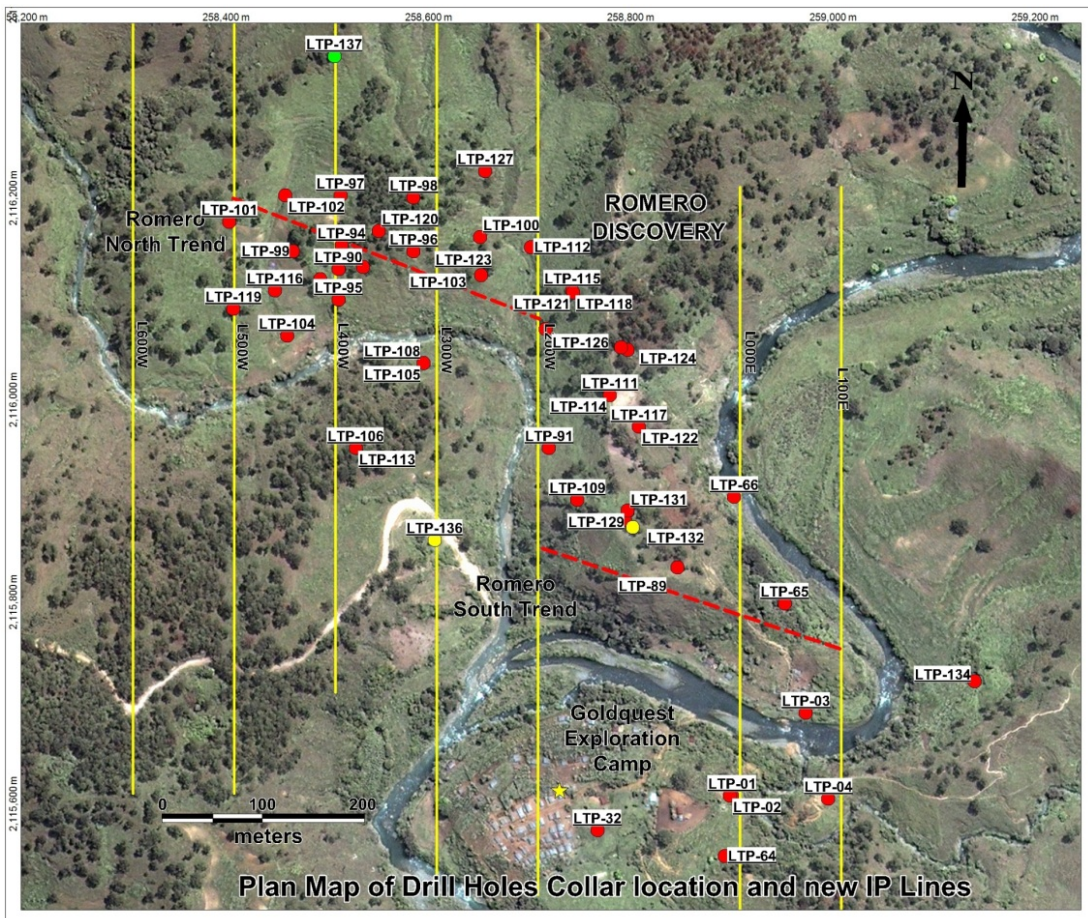
- 3.1 Million tonnes @ 3.14 g/t gold – 316,000 ounces (Micon 2012)



# Spectacular Drilling at Romero Discovery

Anomaly confirmed @ approx. 500m x 200m

400W

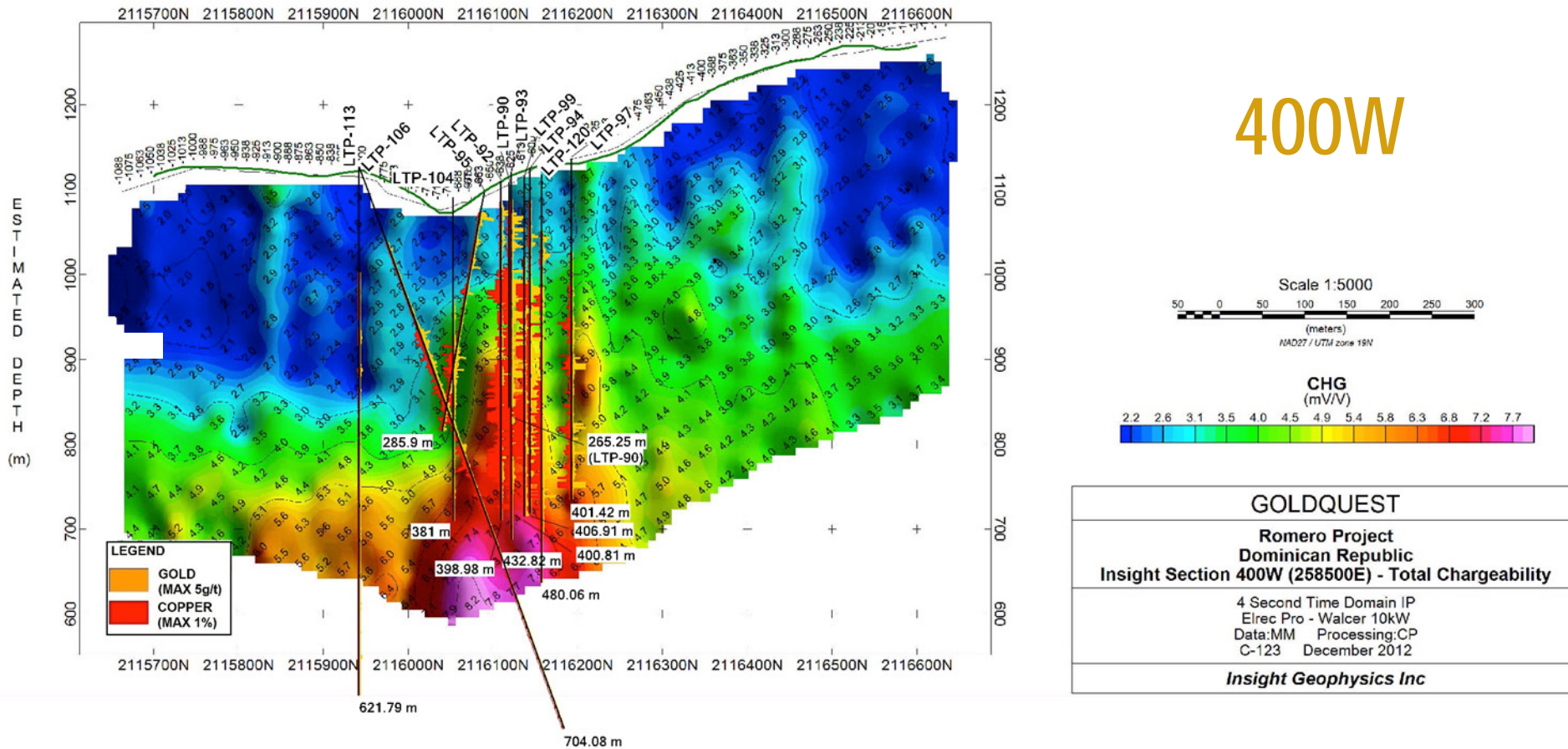


Hole	Length (m)	Gold (g/t)*	Copper (%)	Gold Eq (g/t)*
LTP-90	231	2.4	0.4	3.1
Incl.	12	18.3	2.1	21.5
LTP-92	160	4.5	1.0	5.9
Incl.	44	15.0	1.4	17.2
LTP-93	258	4.5	1.3	6.4
LTP-94	235	7.9	1.4	10.0
Incl.	36	28.2	1.9	31.0
LTP-96	189	3.1	1.1	4.7
Incl.	34	14.2	1.4	16.3
LTP-97	79	2.3	0.3	2.8
LTP-100	123	2.6	0.3	3.1
LTP-103	232	2.0	0.3	2.5
LTP-107	101	1.6	0.7	2.8
LTP-108	37	3.3	1.0	4.9
LTP-111	52	1.3	1.2	3.3
LTP-118	49	2.1	0.7	3.2
LTP-120	57	2.2	0.9	3.6

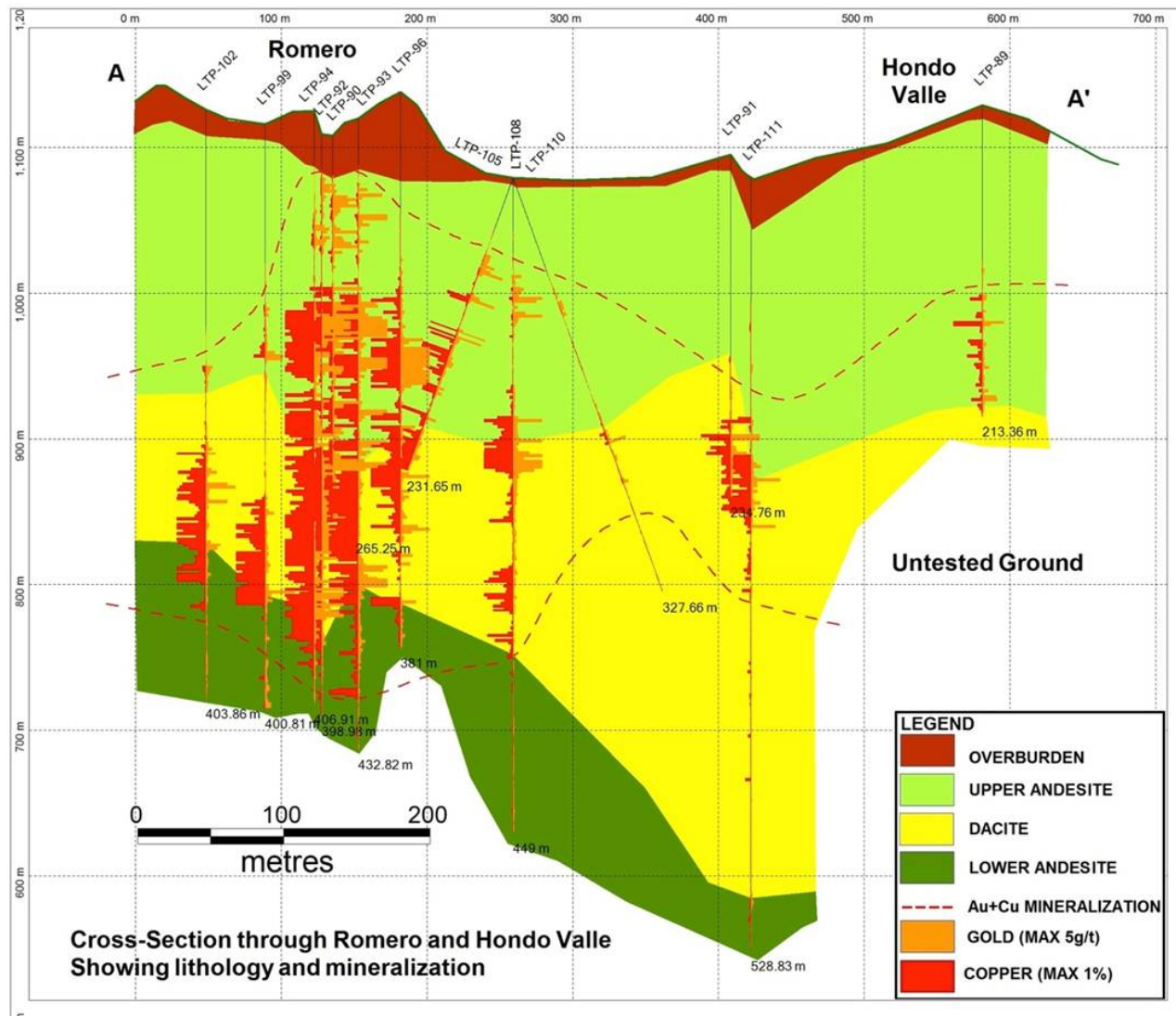
\* Grades un-cut

# Deep IP Section through Romero

- Copper (in red) + Gold (in yellow) mineralization in drill holes
- Strong correlation of gold/copper above strong IP anomaly



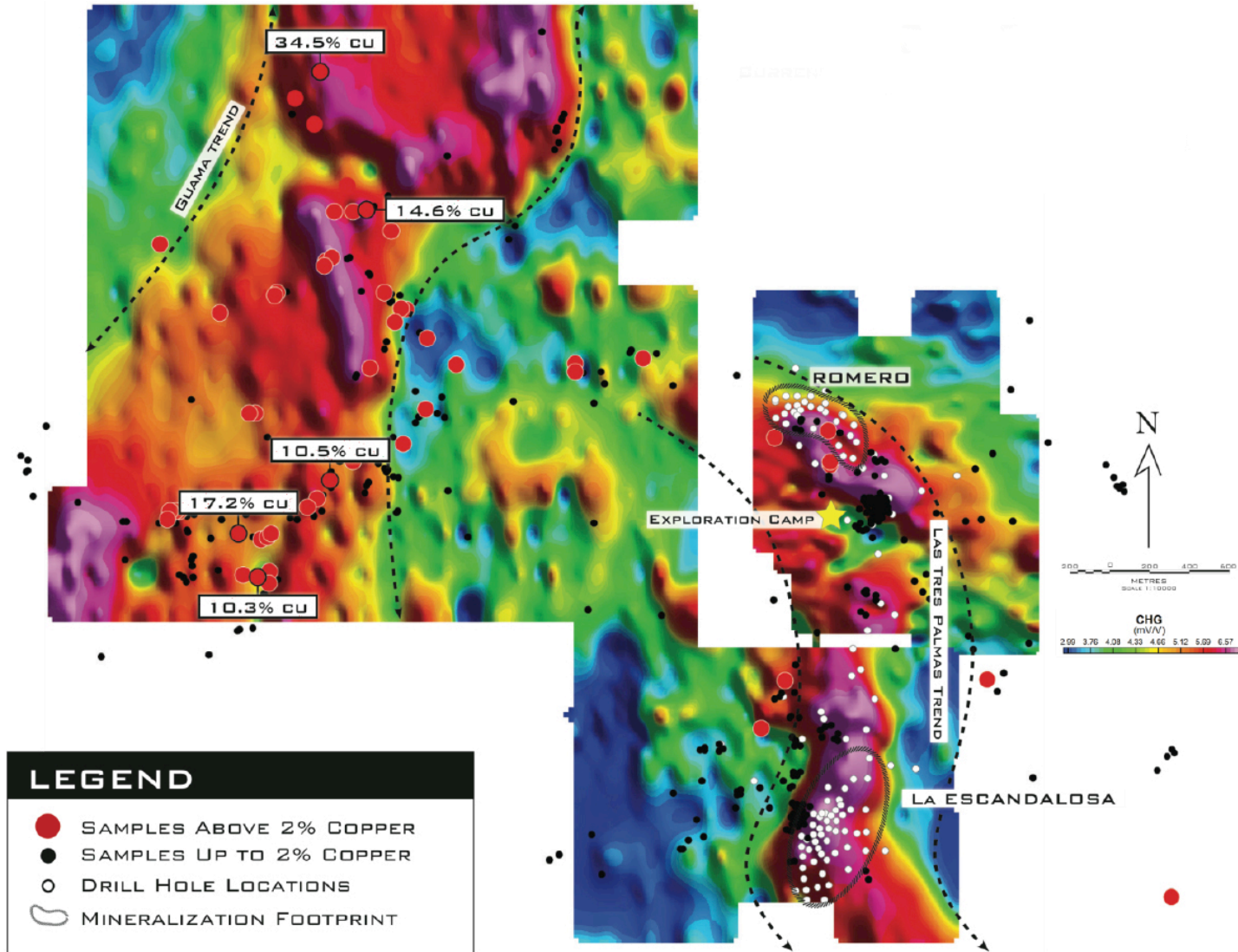
# Cross Section of Romero



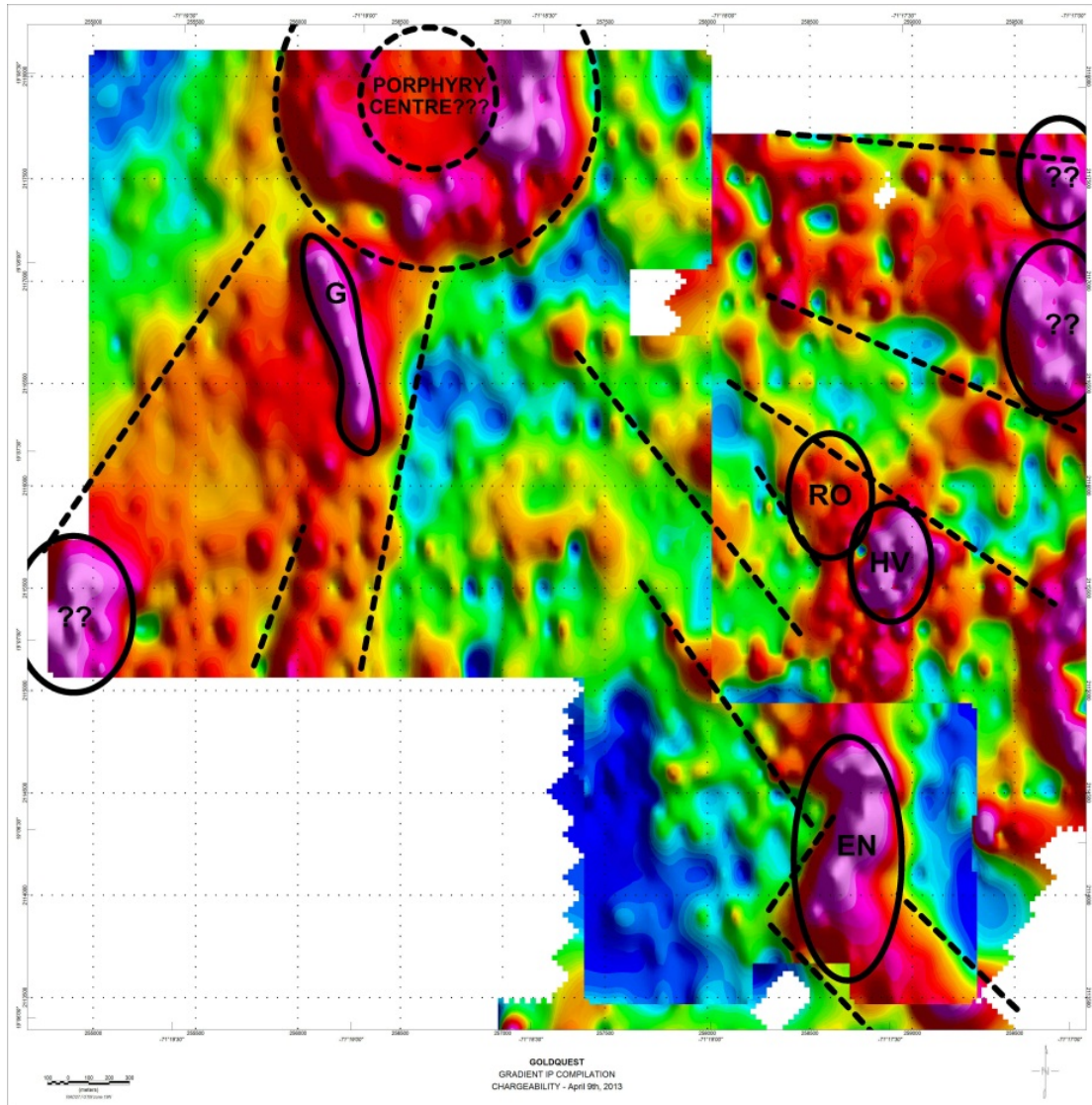
# Summary of work to date

- Two Hydrothermal systems discovered by GoldQuest  
- Escandalosa (2007) and Romero (2012)
- IP established as the Front Line discovery tool
- Geophysics only generates targets – drilling gives results!
- 22,000 metres drilled since Romero discovery (May 2012) –  
up to 25,000 metres for 2013 in budget
- Two IP trends discovered  
- Las Tres Palmas (2011) and Guama (March 2013)

# Regional Model Development



# Regional Model Development



- GoldQuest considers the mineralization in regional context
  - Significant hydrothermal systems discovered
  - Copper bearing intrusive bodies being sought – source of mineralized fluid flows and potentially primary mineralization
- Evidence from drilling geophysics (Quantec and Insight IP, ground and airborne magnetics), sampling and mapping suggests unitized system for further targeting
- High potential for further mineralization

# IP Program

2013



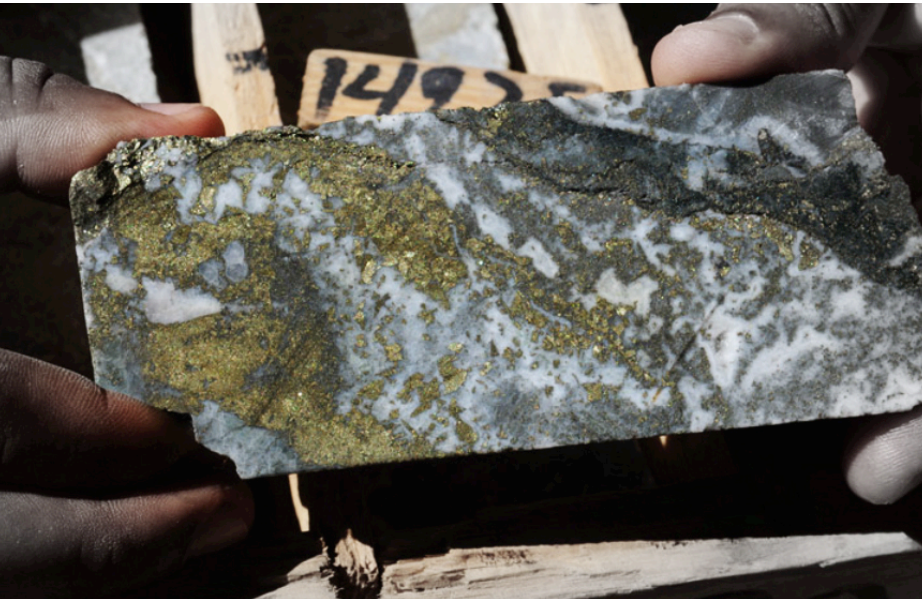
- Guama copper targets (**34 grab samples over 5% copper; max 34%**)
- SE and E extensions of LTP trend
- Jengibre (36m @ 1.6 g/t gold) 25kms SE
- Drilling planned Q2 2013 onwards once IP data has been interpreted





# 2013 Work Programs

- Conservative drilling along Las Tres Palmas trend, including Romero and Escandalosa – upgrading discoveries towards 43-101 resources.
- Drill untested anomalies (Guama, LTP NE, Jengibre)
- Metallurgical evaluation underway
- Economic and Environmental underway
- Full engagement with the local communities



# Contact Details

"We Find Gold!"



**GoldQuest Mining Corp**  
155 Wellington Street West  
Suite 2920  
Toronto, ON  
[www.goldquestcorp.com](http://www.goldquestcorp.com)

**Sebastian de Kloet**  
**Manager**  
**Corporate Communications**  
+1-416-970-5277  
[sdekloet@goldquestcorp.com](mailto:sdekloet@goldquestcorp.com)

**Julio Espailat**  
**President and CEO**  
+1-829-919-8701  
[jespaillat@goldquestcorp.com](mailto:jespaillat@goldquestcorp.com)



Sample D-27493  
158.6-160m  
288 g/t Gold and  
5.6% Copper